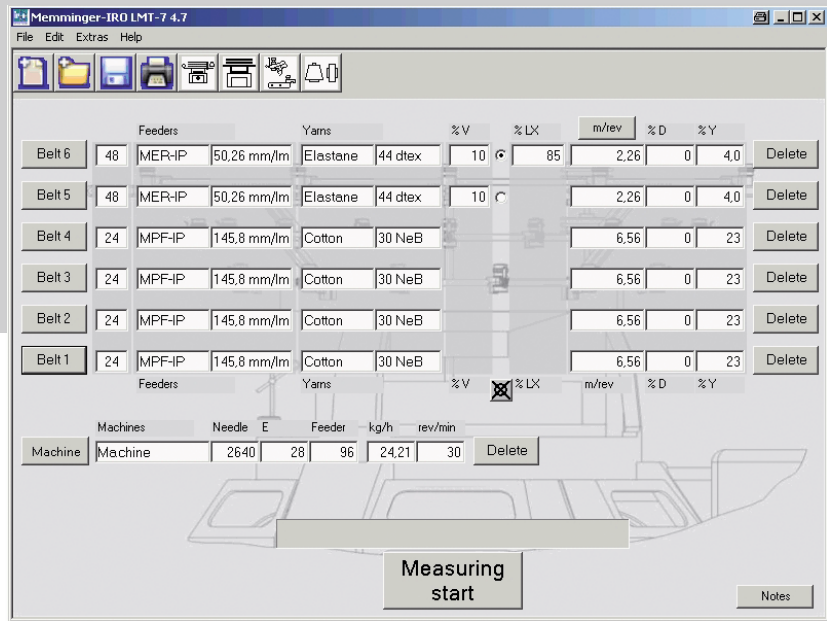


LMT 7

Multifunction Tester:
Monitors, transmits,
informs, displays, saves



The LMT 7 is an electronic, software-based yarn infeed meter. It collects and processes production data from circular knitting machines operating with continuous, positive feed of basic yarn with or without elastane.

The knitting machine, yarn and feeder data needed for processing are stored in the Machine List, Yarn List and Feeder List of the LMT 7 software. This enables the long and short term monitoring of production. It also makes it possible to reproduce various fabric qualities, even when transferring production from one machine to another. Knitting calculations are simpler and quicker because the tester gives an immediate read-out of yarn consumption. Eliminates the need for time consuming laboratory testing.

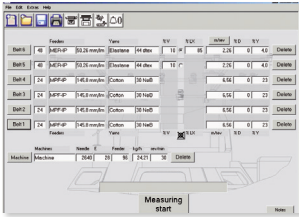
ADVANTAGES

- Better quality control. Any deviations from the specification is measured and stated
- Enables reproduction of the stored fabric specifications to be easily achieved
- Quick, simple and precise setting of uniform yarn infeed values on multiple circular knitting machines
- Monitoring of elastane stretch between the feeders and the needles. This prevents problems in downstream processing and thus reduces the amount of fabric returns
- Accurate display of yarn infeed in mm/needle
- Test results can be saved or printed out

Components LMT 7

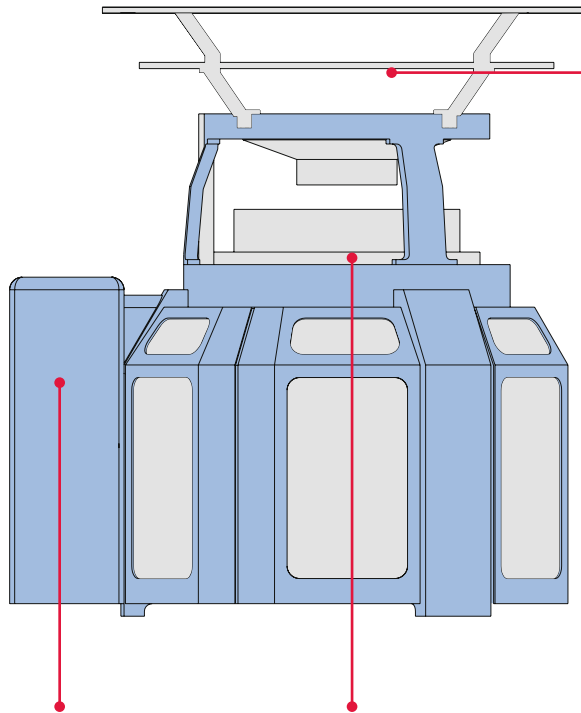
SOFTWARE

The LMT 7 software measures the current yarn infeed and compares production data with data recorded on previous production cycles.



PARAMETERS DISPLAYED

- Yarn infeed length per machine revolution for up to 6 drive belts
- Yarn infeed length per needle
- Percentage by weight of basic and elastane yarn used; blended yarn percentages can also be measured
- Yarn infeed rate deviations compared directly to the reference fabric specification
- Fabric production per hour; knitting machine rev/min



ST ADAPTER AND TERMINAL BOX

The ST adapter and the terminal box function as the communications interface between the LMT 7 software and the pulse generators (MPF IP, MER IP and measuring roller tower IP), the infeed measuring wheel and the machine cycle sensor.



INFEEED MEASURING WHEEL WITH MAGNETIC STAND

The infeed measuring wheel measures the stretch of the elastane yarn between the feeder and the knitting point.



MPF IP, MER IP, MEASURING ROLLER TOWER IP

The MPF IP, MER IP and the measuring roller tower IP measure the belt speed by transmitting pulses per revolution to the meter. On circular knitting machines fitted with feeders by other manufacturers, the belt speed is measured by the measuring roller tower IP.



TECHNICAL DATA

Operating system:	WINDOWS XP or higher
Power supply:	24 V AC +/- 15%, 50/60 Hz
Max. power absorbed:	< 10 W

ADVANCED KNITTING TECHNOLOGY

MEMMINGER-IRO GMBH
 Jakob-Mutz-Straße 7 | 72280 Dornstetten-Germany
 Tel. +49 7443 281-0 | info@memminger-iro.de
 www.memminger-iro.de

